

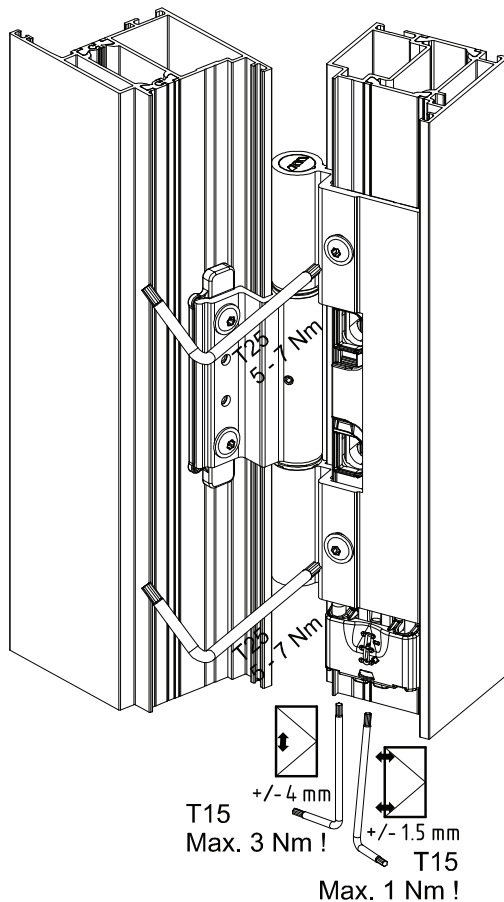


RKDOORSYSTEMS

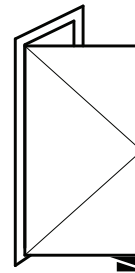
Designer Profile Hinge Adjustment Instructions

Adjusting designer door hinges

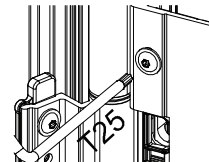
ATTENTION: When adjusting **ALWAYS** support the door and loosen the fixing screw



- 1** Middle - support a door sash with a wedge (release the hinge)

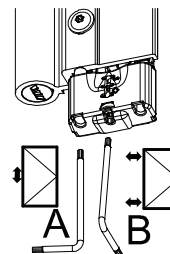


- 2** Loose the fixing screw

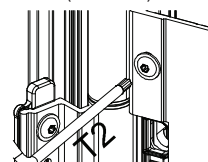


Adjusting from the side
+ 3 loose the rotations
- 1 loose the rotation
Height adjustment
All screws »1/2« - loose rotation

- 3** Height adjusting A
Slot adjusting B



- 4** Fixing screw (5-7 Nm)



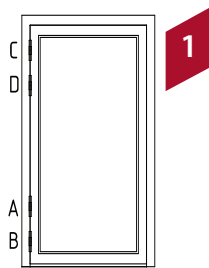


RKDOORSYSTEMS

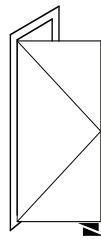
Designer Profile Hinge Adjustment Instructions

Instructions for disassembly

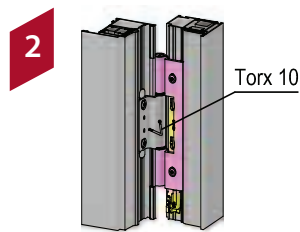
ATTENTION: When adjusting **ALWAYS** support the door and loosen the fixing screw



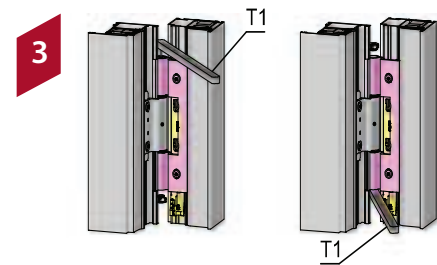
Disassembly – order



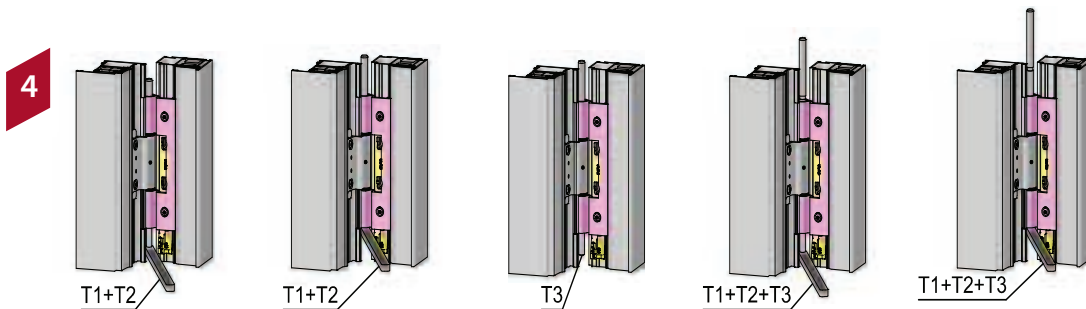
Open door-sash and support it



Loose safety bolts



Knock out a cover cap with a plastic hammer



Knock out bolts with a plastic hammer